

ATTACHMENT A

ATTACHMENT A

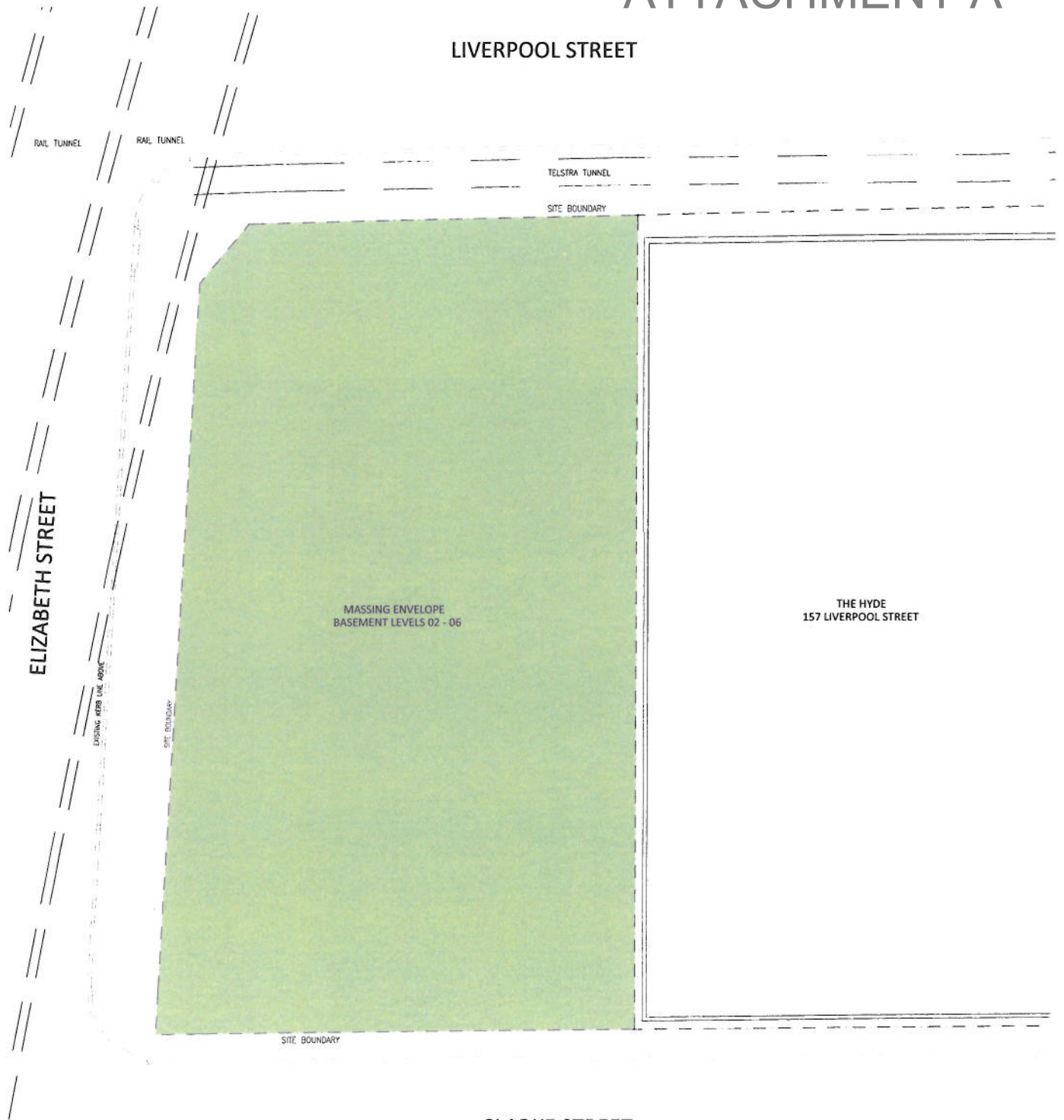
BUILDING ENVELOPE PLANS

130-134 ELIZABETH STREET, SYDNEY

ATTACHMENT A

ARCHITECTURE INTERIOR DESIGN MASTER PLANNING FACILITIES PLANNING

LIVERPOOL STREET



MASSING ENVELOPE
BASEMENT LEVELS 02 - 06

THE HYDE
157 LIVERPOOL STREET

CLARKE STREET

SALVATION ARMY BUILDING
140 ELIZABETH STREET

MASSING ENVELOPE KEY

- BUILDING ENVELOPE
- EXISTING ADJACENT BUILDING ENVELOPE



ATTACHMENT A

ARCHITECTURE: INTERIOR DESIGN MASTER PLANNING FACILITIES PLANNING



AWNING ENVELOPE

MASSING ENVELOPE KEY

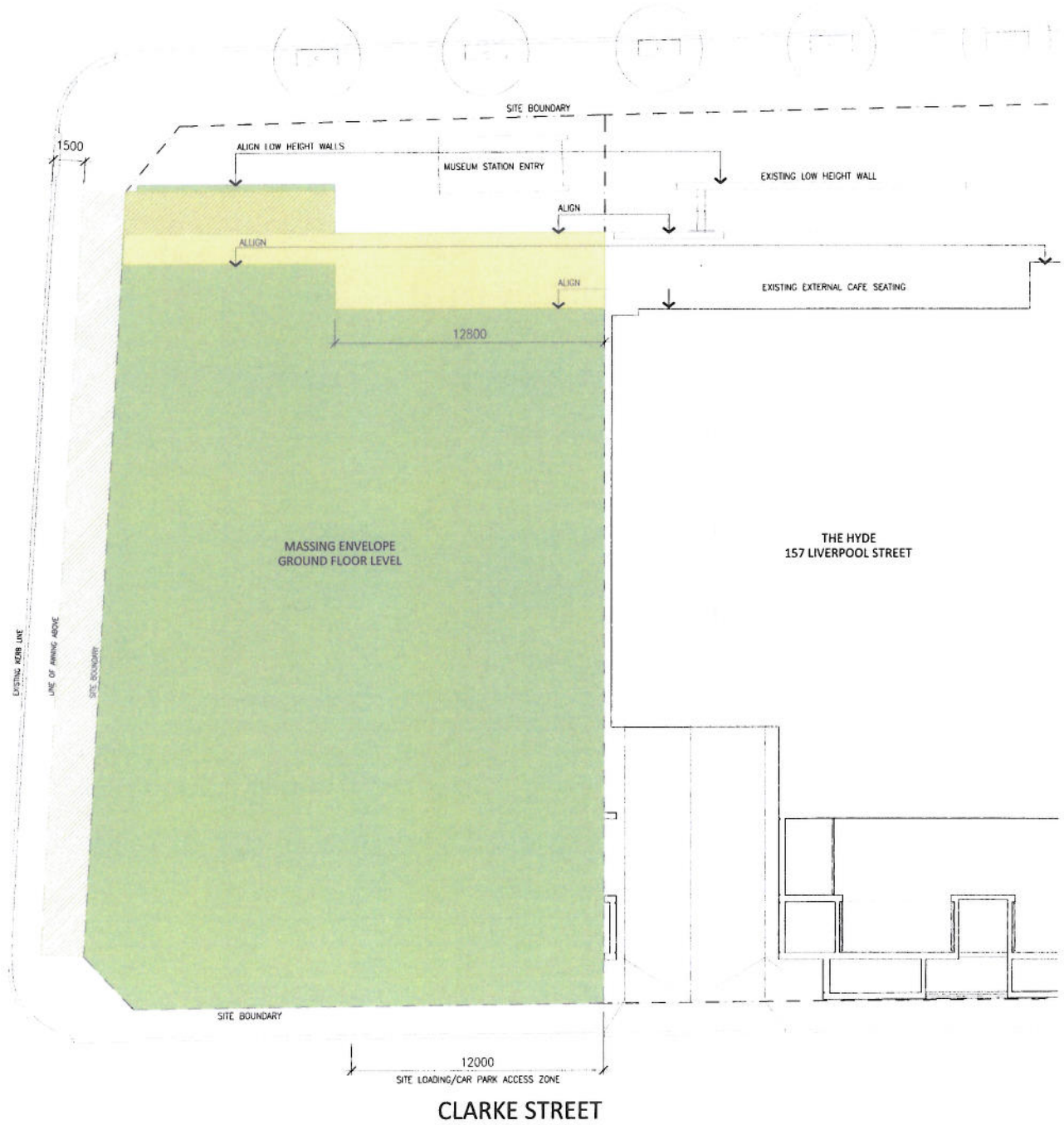
- BUILDING ENVELOPE
- BUILDING ENVELOPE (INCLUDE ACCESS TO MUSEUM STATION PEDESTRIAN TUNNEL)
- EXISTING ADJACENT BUILDING ENVELOPE



ATTACHMENT A

LIVERPOOL STREET

ELIZABETH STREET



MASSING ENVELOPE KEY

- BUILDING ENVELOPE
- AWNING ENVELOPE
- ACTIVE EXTERNAL ENVELOPE
- EXISTING ADJACENT BUILDING ENVELOPE

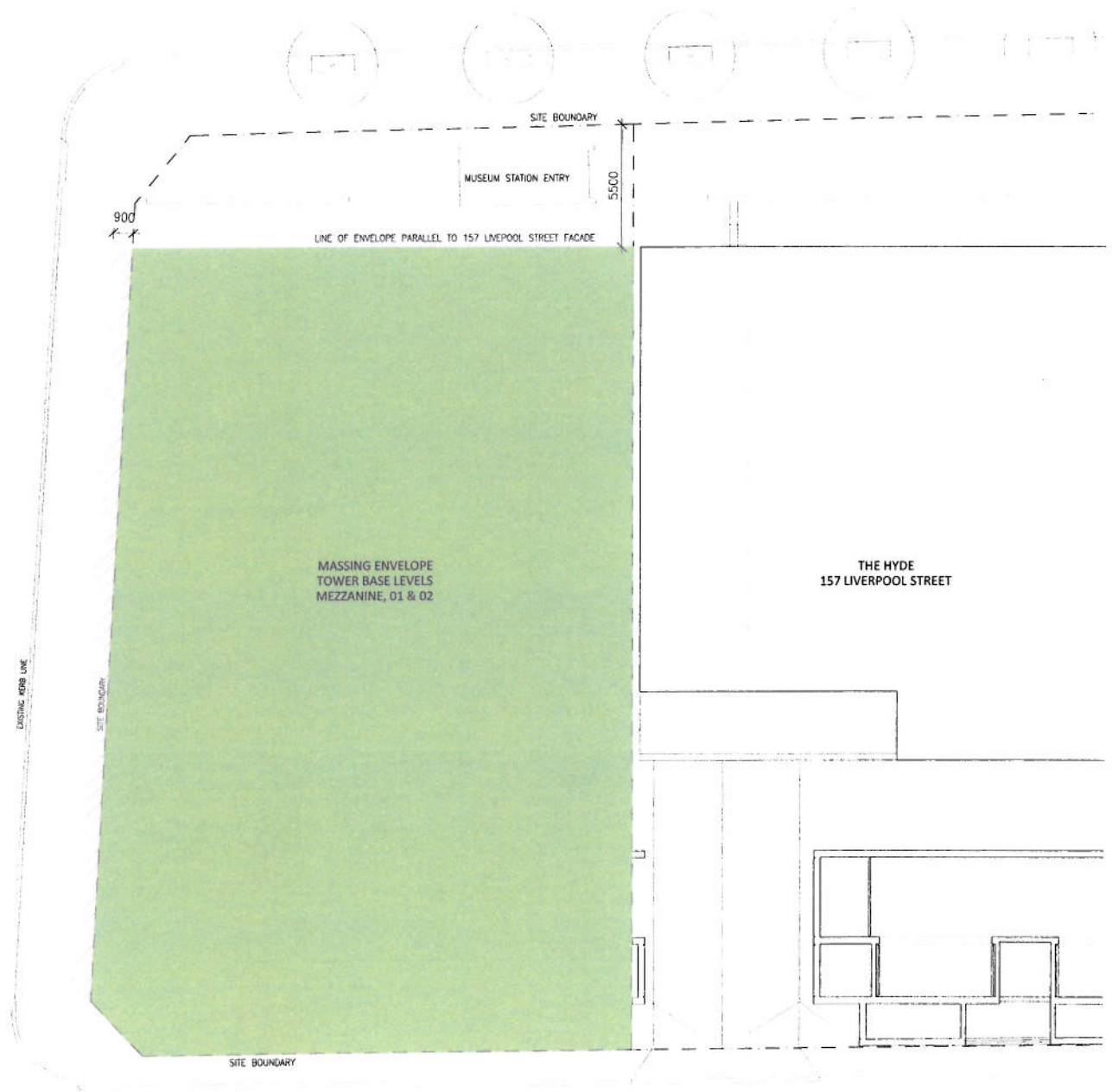


ATTACHMENT A

LIVERPOOL STREET

ARCHITECTURE INTERIOR DESIGN MASTER PLANNING FACILITIES PLANNING

ELIZABETH STREET



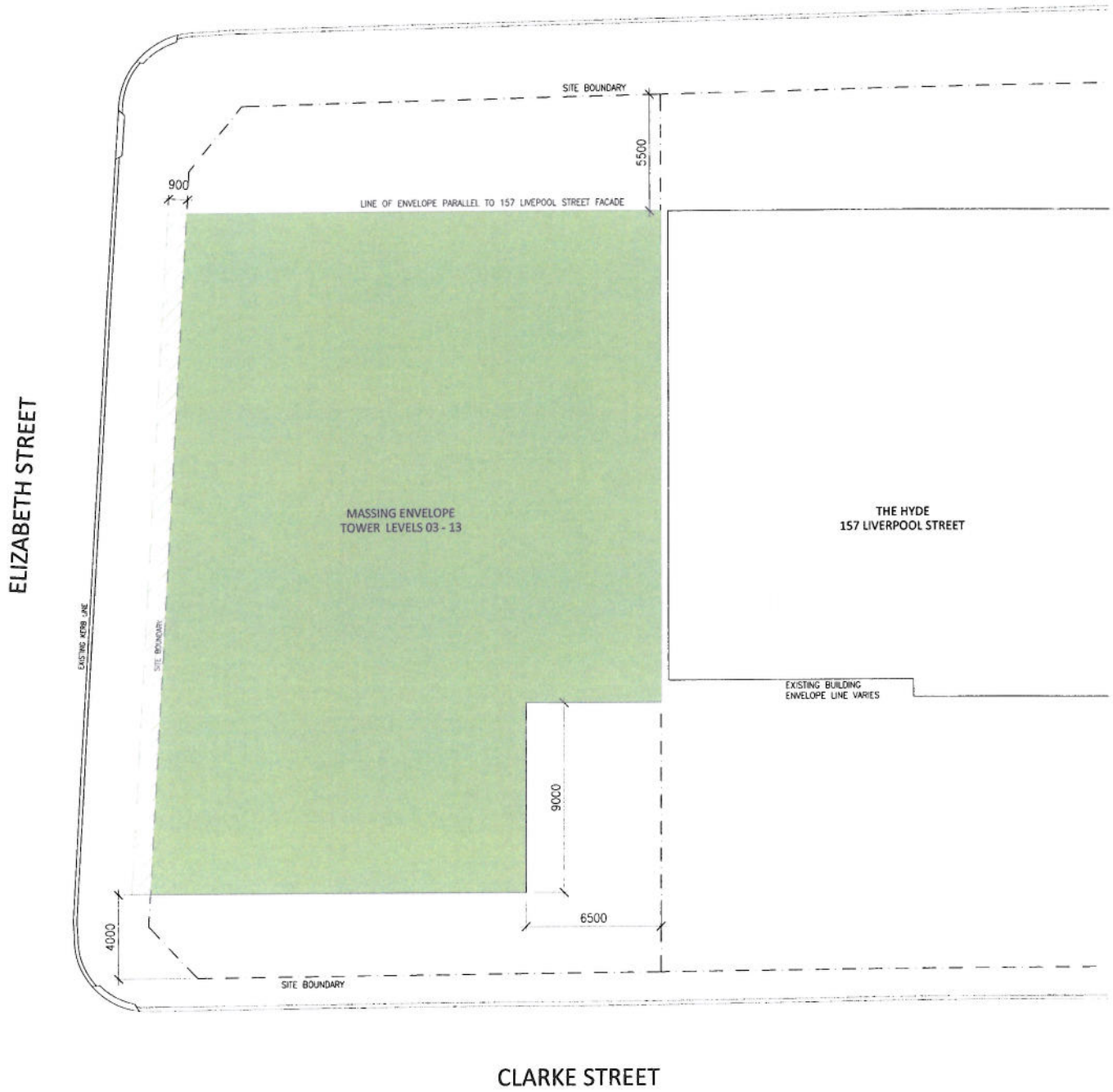
CLARKE STREET

- MASSING ENVELOPE KEY**
- BUILDING ENVELOPE
 - SUNSHADE ENVELOPE
 - EXISTING ADJACENT BUILDING ENVELOPE



ATTACHMENT A

LIVERPOOL STREET



CLARKE STREET

- MASSING ENVELOPE KEY**
- BUILDING ENVELOPE
 - SUNSHADE ENVELOPE
 - EXISTING ADJACENT BUILDING ENVELOPE



ATTACHMENT A

LIVERPOOL STREET



CLARKE STREET

- MASSING ENVELOPE KEY**
- BUILDING ENVELOPE
 - SUNSHADE ENVELOPE
 - EXISTING ADJACENT BUILDING ENVELOPE



ATTACHMENT A

LIVERPOOL STREET




ELIZABETH STREET



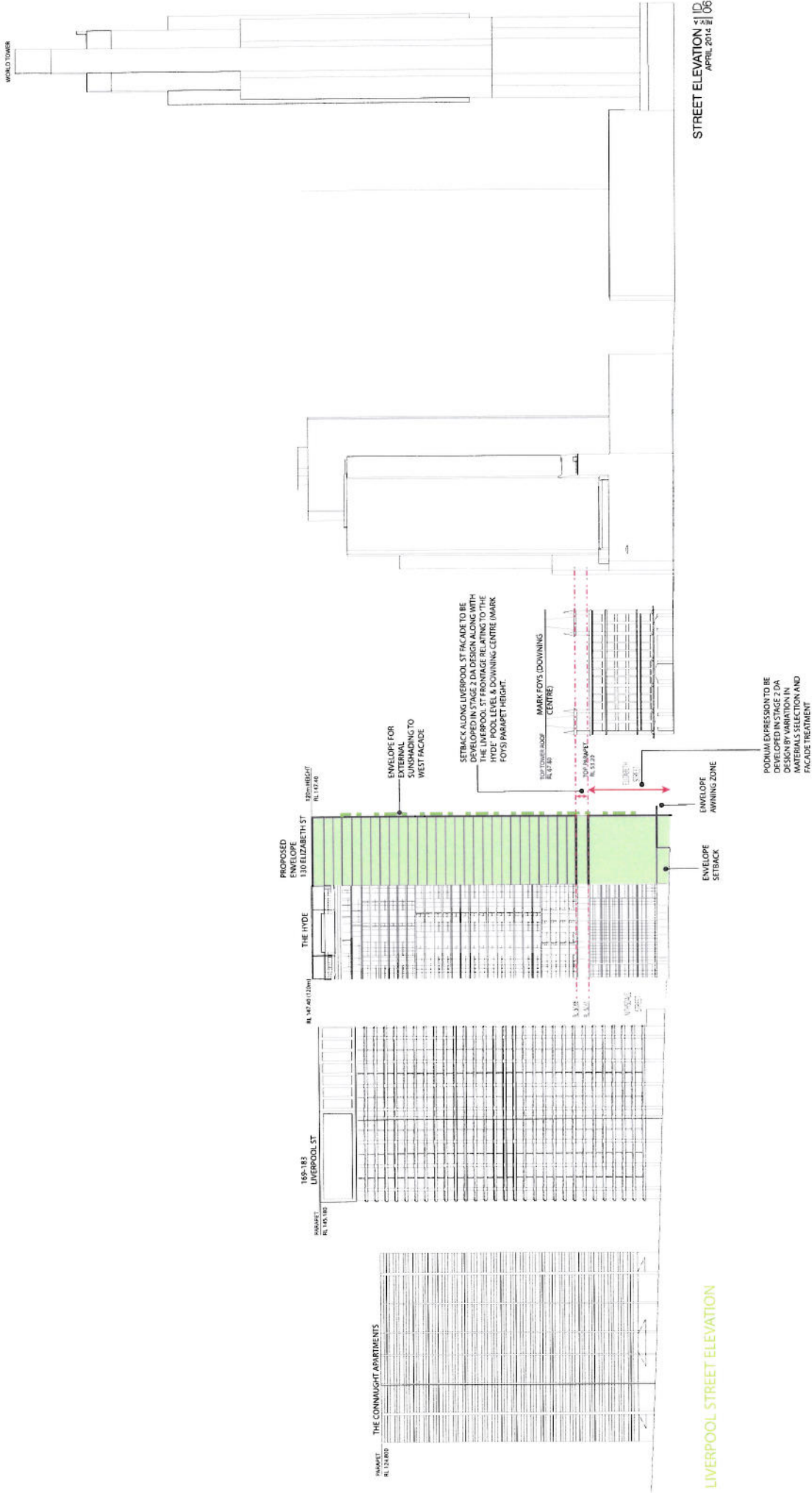
CLARKE STREET

SALVATION ARMY BUILDING
140 ELIZABETH STREET

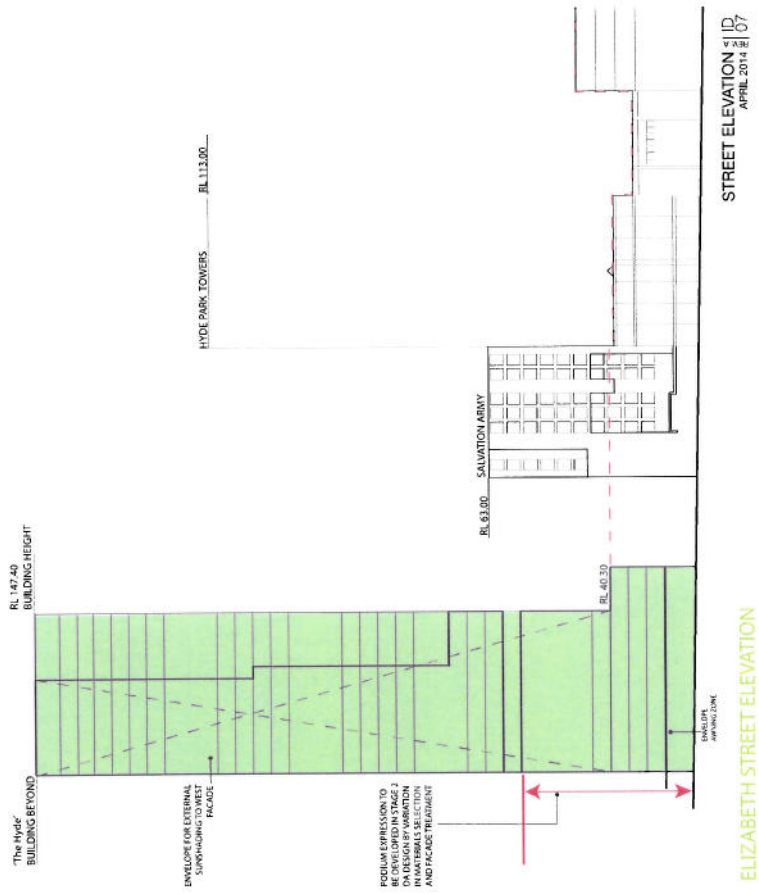
MASSING ENVELOPE KEY

-  BUILDING ENVELOPE
-  SUNSHADE ENVELOPE
-  EXISTING ADJACENT BUILDING ENVELOPE





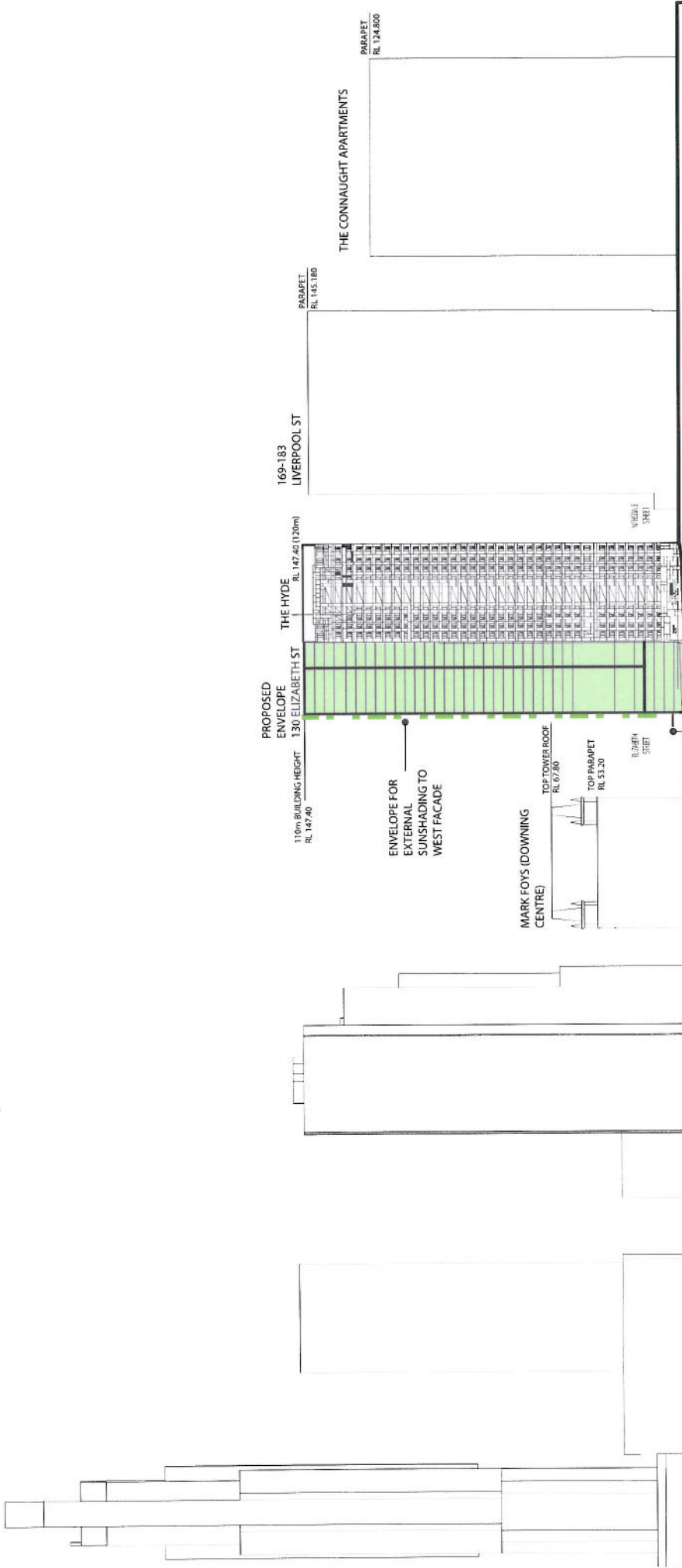
2.4 STREET ELEVATIONS



ELIZABETH STREET ELEVATION

2.4 STREET ELEVATIONS

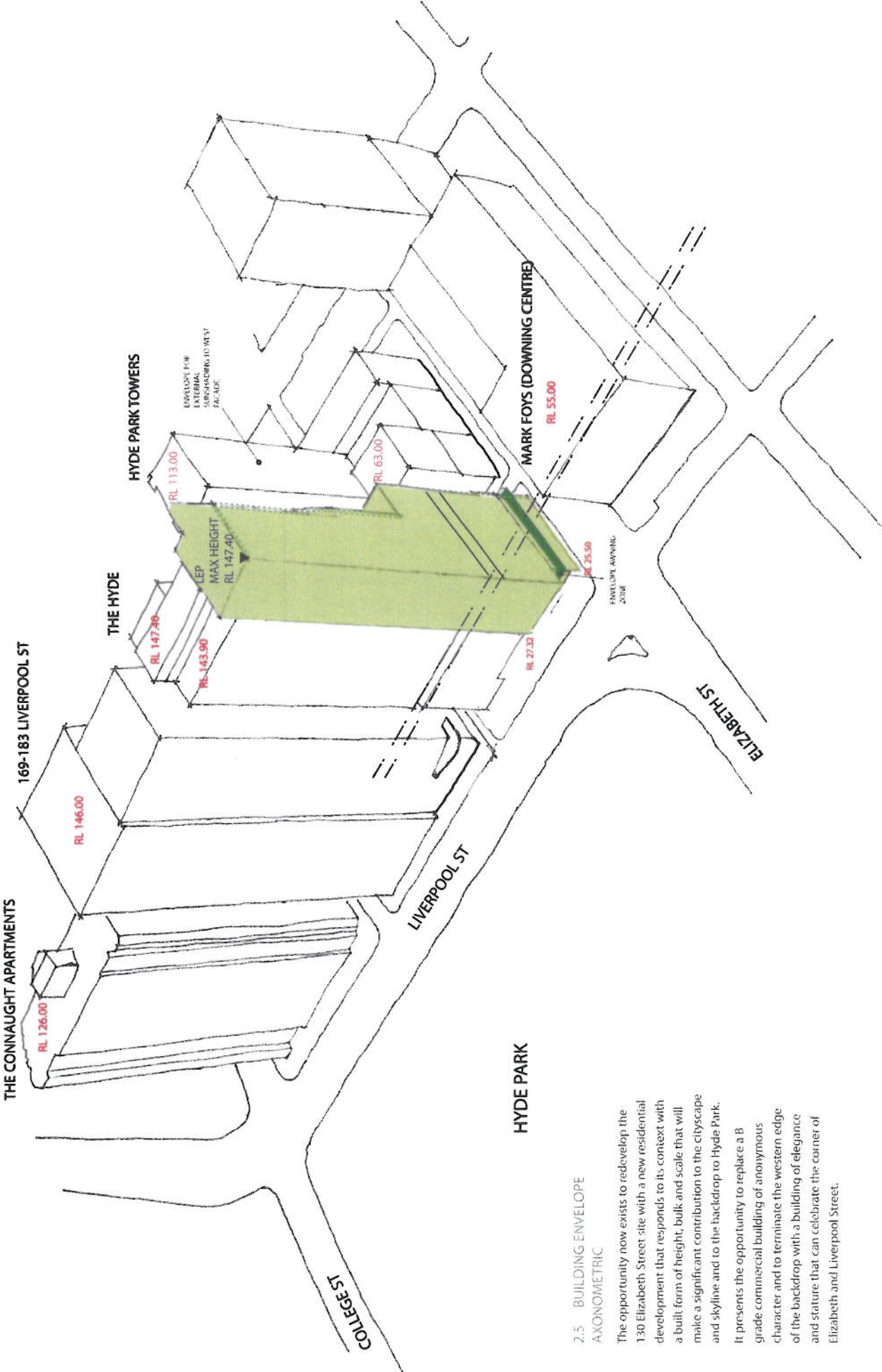
WORLD TOWER



STREET ELEVATION ID
APRIL 2014 R1 08

CLARKE STREET ELEVATION

2.4 STREET ELEVATIONS



2.5 BUILDING ENVELOPE
AXONOMETRIC

The opportunity now exists to redevelop the 130 Elizabeth Street site with a new residential development that responds to its context with a built form of height, bulk and scale that will make a significant contribution to the cityscape and skyline and to the backdrop to Hyde Park. It presents the opportunity to replace a B grade commercial building of anonymous character and to terminate the western edge of the backdrop with a building of elegance and stature that can celebrate the corner of Elizabeth and Liverpool Street.

EXISTING



PROPOSED



2.6 PHOTOMONTAGES